

Anaerobic Digesting

Revolutionizing Waste Management Through Anaerobic Digestion



Sustainable Solutions for Energy Recovery and Organic Waste



Company Overview

- ❑ **Company Name** : Sustainable Planet Solutions
- ❑ **Founded** : 2016
- ❑ **Headquarters** : Europe, The Netherlands
- ❑ **Mission** : One of our missions is to provide sustainable, cost-effective water treatment solutions for a cleaner, more sustainable future.
- ❑ **Vision** : To be a leading provider of innovative waste2energy systems with Anaerobic Digesting technologies.



Company Overview

- ❑ **Scalable solutions/Proven technologies/Operational excellence**
- ❑ **Main expertises:**
 - ❑ Anaerobic digestion/Waste to Energy
 - ❑ Mixed Waste Processing
 - ❑ Composting
 - ❑ Waste Water Treatment
 - ❑ Drinking water systems
- ❑ **Services:**
 - ❑ Design & Build/Design, Build & Operate and finance
 - ❑ Consultancy: feasibility/operations support/spare parts management

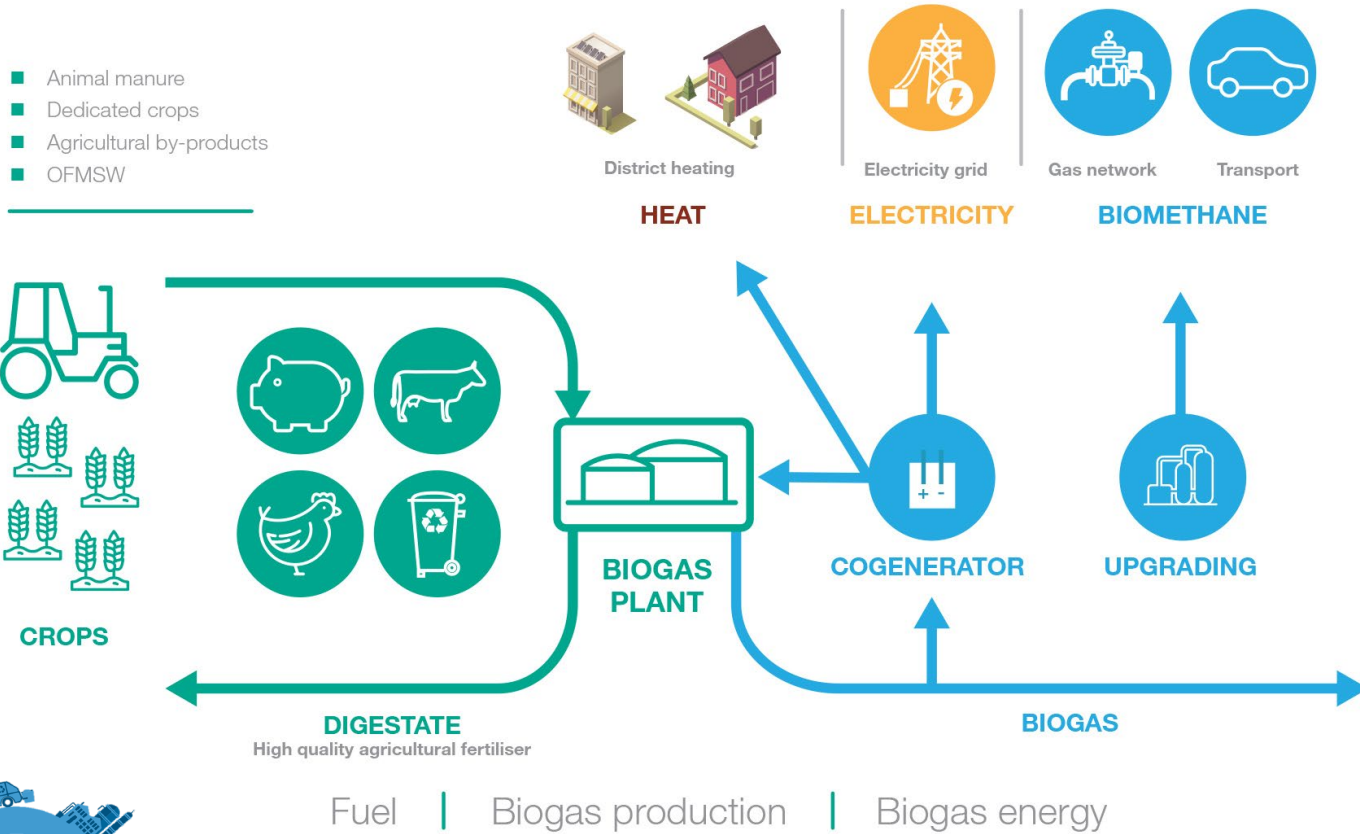


What is Anaerobic Digesting

- ❑ **Definition:** A biological process that breaks down organic material in the absence of oxygen, producing biogas (methane + CO₂) and digestate (a nutrient-rich residue).
- ❑ **Inputs:** Food waste, agricultural residues, industrial organic waste, and sewage sludge.
- ❑ **Outputs:**
 - ❑ **Biogas:** Renewable energy source for electricity, heat, or as a vehicle fuel.
 - ❑ **Digestate:** A sustainable fertilizer or soil conditioner/fertilizer



What is Anaerobic Digesting



Why Choose Anaerobic Digestion?

- ❑ **Waste Management:** Reduces organic waste in landfills and mitigates methane emissions.
- ❑ **Energy Generation:** Converts waste into clean, renewable energy.
- ❑ **Carbon Reduction:** Helps achieve net-zero carbon goals by offsetting fossil fuel use.
- ❑ **Resource Recovery:** Produces valuable by-products like digestate for agriculture.



Our Solutions

- ❑ **Custom AD Systems:** Scalable solutions for small-scale and large-scale facilities.
- ❑ **Feedstock Expertise:** Handling diverse organic inputs from industries, agriculture, and municipalities.
- ❑ **Energy Recovery Technologies:** Integration with combined heat and power (CHP) units or biomethane upgrading systems.
- ❑ **Lifecycle Support:** From feasibility studies to installation, training, maintenance, operation and finance

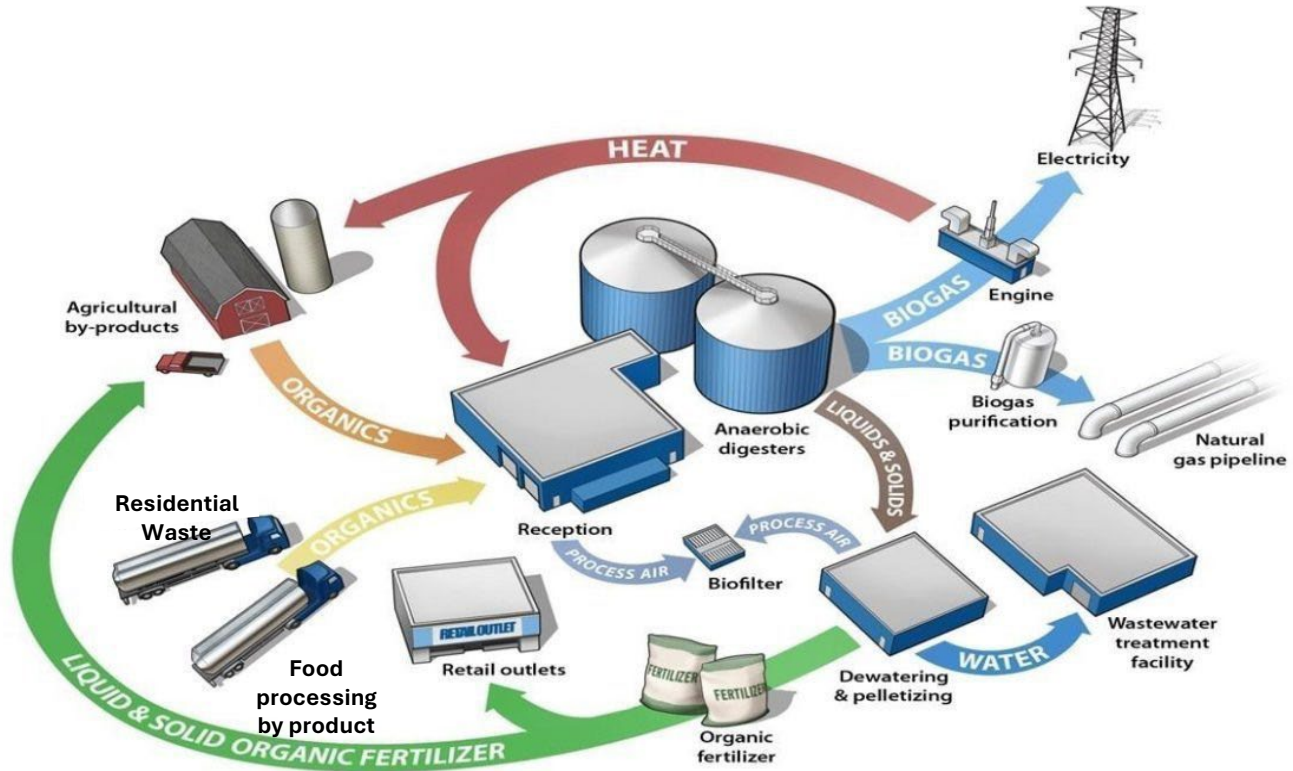


Key Applications

- ❑ **Municipal Solid Waste:** Reducing landfill burden.
- ❑ **Agriculture:** Treating manure and crop residues while providing biogas and fertilizer.
- ❑ **Food Industry:** Managing food processing waste effectively.
- ❑ **Sewage Treatment:** Sludge digestion to generate biogas for energy use.



Environmental and Economic Impact



Why Choose Us?

- ❑ **Experience** : Our engineers are over 20 years in the AD-industry.
- ❑ **Innovation** : We use the latest technologies to ensure the best solutions.
- ❑ **Tailored Solutions** : Customized treatment systems designed to meet the specific needs of our clients.
- ❑ **Expert Team** : Our engineers and technicians are experts in AD
- ❑ **Sustainability Focused** : Committed to providing environmentally friendly and cost-effective solutions.
- ❑ **Operation** : We can offer complete operation and maintenance for our clients
- ❑ **Finance** : We have options for financing your project.

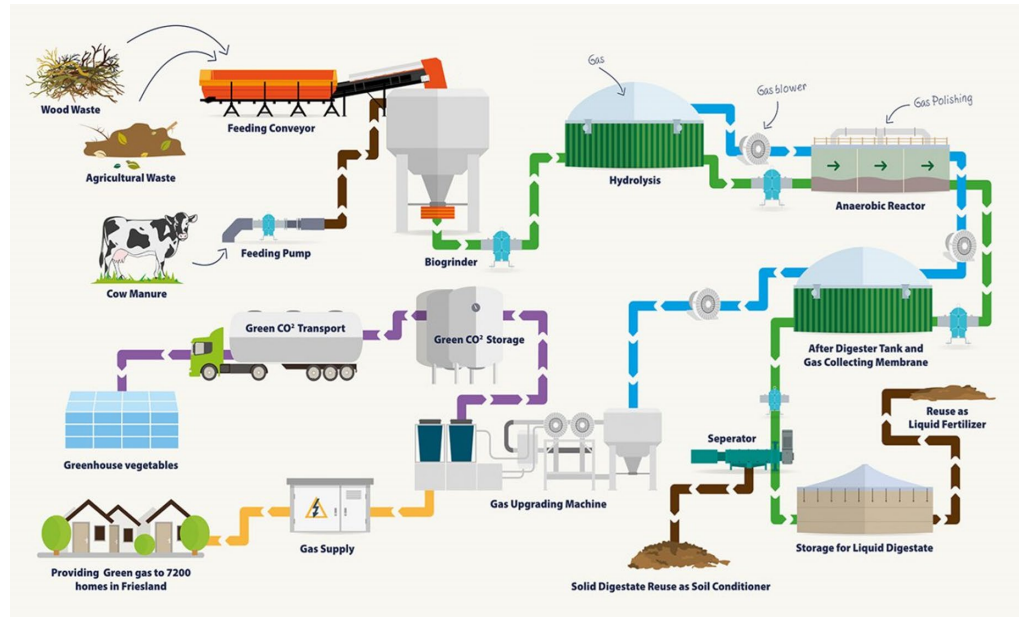


Future Plans and Innovations

- ❑ **Expansion** : We are expanding our reach to new regions, offering innovative solutions to a broader market.
- ❑ **Research and Development** : Continuous investment in R&D to develop more efficient and environmentally sustainable technologies.
- ❑ **Strategic Partnerships** : Collaborating with industry leaders and organizations to drive innovation in wastewater treatment and reuse.



Contact Information



- Website : www.sustainableplanetsolutions.life
- Contact : Joe Risk
- Phone : +1 (702) 415-1236
- Email : j.risk@sustainableplanetsolutions.life

